

Square Drive Swivel Sockets · Universal Adapters

The use of standard universal adapters and swivel sockets may compromise joint integrity, preventing adequate torque from reaching the fastener. Studies have determined that when the swivel angle exceeds 15°, there may be significant 'scatter' or reduction in measured torque values.

Omega Technologies has developed a line of universal adapters and swivel sockets that have a maximum tilt of 15°, and are smaller and lighter than conventional universal sockets. Available for 1/4", 3/8", and 1/2" square drives, these tools are color-coded gold and black for easy identification.

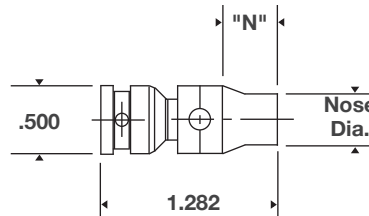
Machined from premium shock-resistant 4340 steel and heat-treated for toughness, these tools offer top performance and long life. Our swivel socket's max torque values are higher than typical 30°-35° swivels.

For extremely tight places, a low-profile (LP) version of the 1/4" swivel sockets is also available.

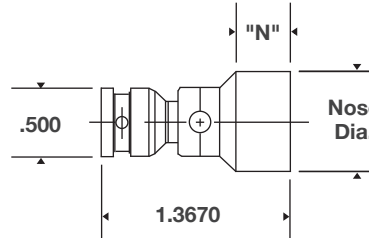


Please note that these are not intended for use with impact tools.

1/4" Low Profile Swivel Socket
3/16"-3/8"



1/4" Low Profile Swivel Socket
7/16" and Larger

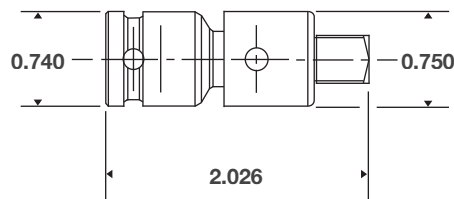


1/4" Square Drive Low Profile Swivel Sockets

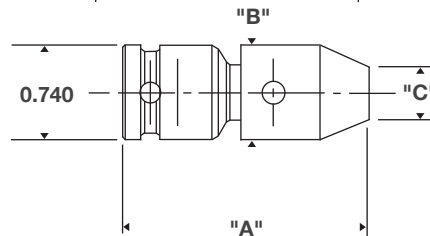
SIZE	PART NUMBER (6 PT.)	PART NUMBER (12 PT.)	NOSE DIAMETER	NOSE LENGTH (N)
3/16	US250-18	USD250-18	0.317	0.400
7/32	US250-21	USD250-21	0.343	0.400
1/4	US250-25	USD250-25	0.379	0.400
9/32	US250-28	USD250-28	0.445	0.400
5/16	US250-31	USD250-31	0.451	0.400
11/32	US250-34	USD250-34	0.480	0.400
3/8	US250-37	USD250-37	0.510	0.400
7/16	US250-43	USD250-43	0.585	0.500
1/2	US250-50	USD250-50	0.690	0.500
9/16	US250-56	USD250-56	0.750	0.500

Do not exceed 240 lb-in.

3/8" Adapter



3/8" Square Drive Swivel Socket



3/8" Square Drive Swivel Sockets

SIZE	PART NUMBER (6 PT.)	PART NUMBER (12 PT.)	LENGTH (A)	DIAMETER (B)	NOSE (C)
3/16	US375-18	USD375-18	1.906	0.750	0.339
7/32	US375-21	USD375-21	1.906	0.750	0.375
1/4	US375-25	USD375-25	1.906	0.750	0.410
9/32	US375-28	USD375-28	1.906	0.750	0.448
5/16	US375-31	USD375-31	1.906	0.750	0.485
11/32	US375-34	USD375-34	1.906	0.750	0.520
3/8	US375-37	USD375-37	1.906	0.850	0.550
7/16	US375-43	USD375-43	1.906	0.850	0.615
1/2	US375-50	USD375-50	2.006	0.850	0.682
9/16	US375-56	USD375-56	2.106	0.850	0.800
5/8	US375-62	USD375-62	2.206	0.850	1.000
3/4	US375-75	USD375-75	2.306	0.850	1.125

Do not exceed 1000 lb-in.

* Torque control sockets and adapters are not intended for use with "impact" tools.