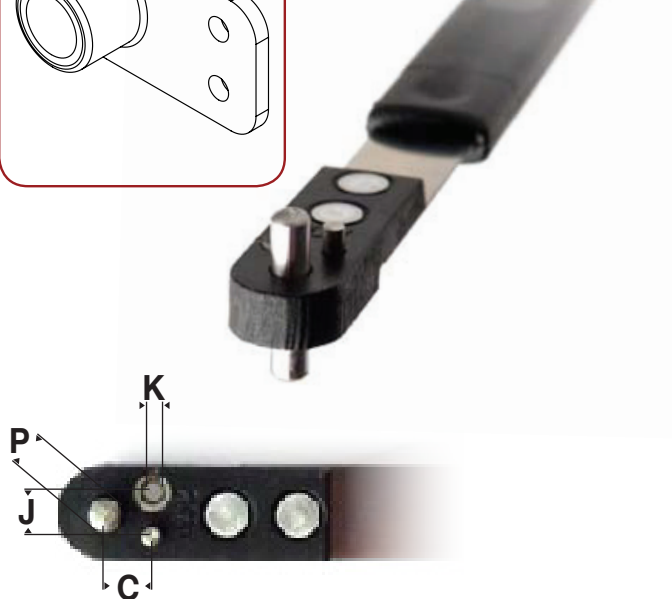
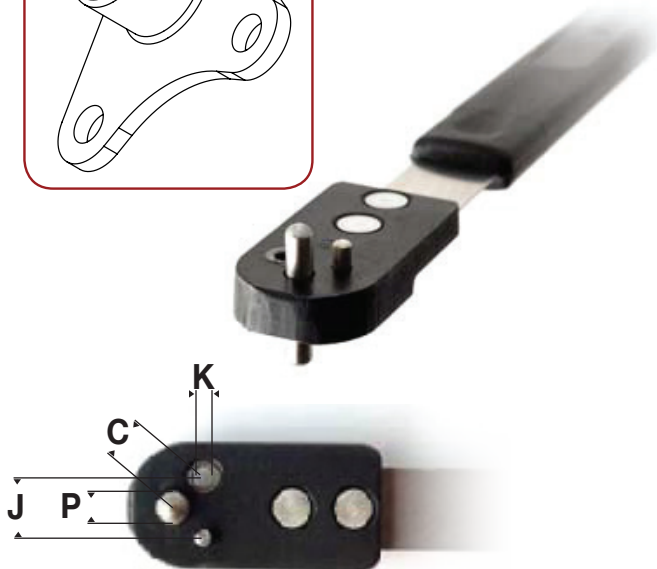
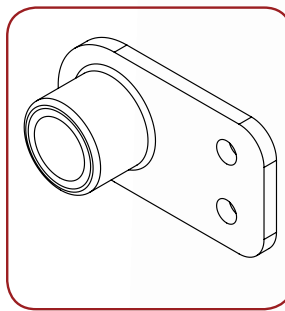
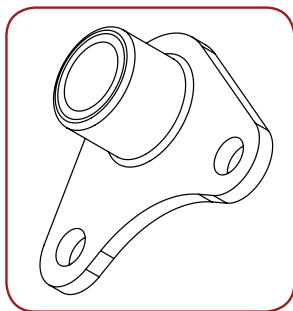


Corner Wing Miniature • Side Lug Miniature

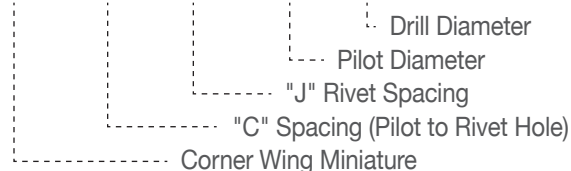


Corner Wing Miniature (CWM)

PART NUMBER	(C) HOLE SPACING	(J) HOLE SPACING	(P) PILOT DIAMETER	(K) DRILL SIZE
NPJ 518SA	0.203	0.287	0.1120	#40
NPJ518SB	0.218	0.308	0.1390	#40
NPJ518SC	0.234	0.331	0.1640	#40
NPJ518SD	0.250	0.354	0.1910	#40
NPJ518SE	0.281	0.397	0.2480	#40
NPJ518SF	0.312	0.441	0.3120	#30
NPJ518SJ	0.250	0.354	0.1875	#40
NPJ518UF	0.312	0.441	0.3430	#30
NPJ518UA	0.203	0.287	0.1400	#40
NPJ518UB	0.218	0.308	0.1660	#40
NPJ518UC	0.234	0.0331	0.1930	#40
NPJ518UD	0.250	0.354	0.2180	#40
NPJ518UE	0.281	0.397	0.2810	#40
NPJ518NAS-C-A02	0.125	0.177	0.0860	#51
NPJ518NAS-C-A03	0.138	0.195	0.0990	#51
NPJ518NAS-C-A04	0.148	0.209	0.1120	#51
NPJ518NAS-C-A06	0.172	0.243	0.1390	#51

To request items not listed, specify dimensions as follows

CWM-XXX-XXX-XXXX-XX



Custom Marking Available

Side Lug Miniature (SLM)

PART NUMBER	(C) HOLE SPACING	(J) HOLE SPACING	(P) PILOT DIAMETER	(K) DRILL SIZE
NPJ 518TA	0.250	0.219	0.1910	#40
NPJ518TB	0.281	0.219	0.2480	#40
NPJ518TC	0.312	0.250	0.3120	#30
NPJ518TD	0.359	0.269	0.3125	#30
NPJ518NAS-D-A5	0.359	0.269	0.3120	#30
NPJ518NAS-D-A6	0.414	0.269	0.3720	#30
NPJ518NAS-D-A08	0.234	0.219	0.1640	#40
NPJ518TE	0.250	0.219	0.1875	#40

To request items not listed, specify dimensions as follows

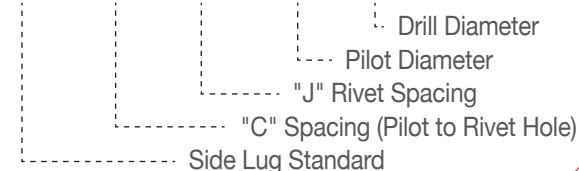
SLM-XXX-XXX-XXXX-XX



Side Lug Standard (SLS)

For larger side lug anchor nuts, please specify as follows

SLS-XXX-XXX-XXXX-XX



Nut Plate Jigs